

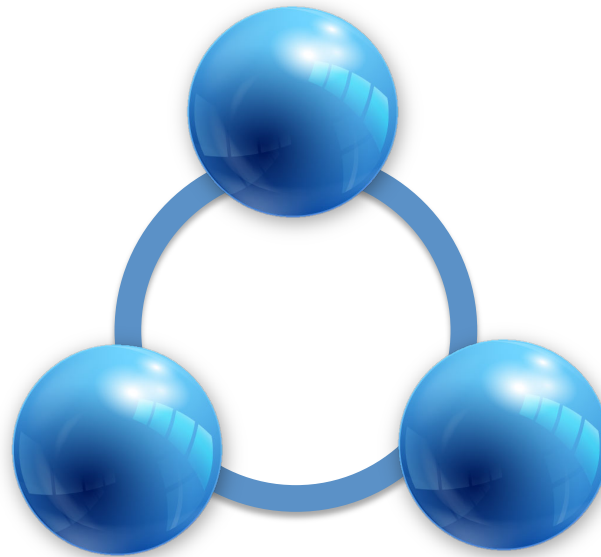
## Thinking About The Church of the City And Apostolic Structures

*Reimagining what the Church could,  
perhaps biblically should, look like in city contexts*



## **A City Church Model**

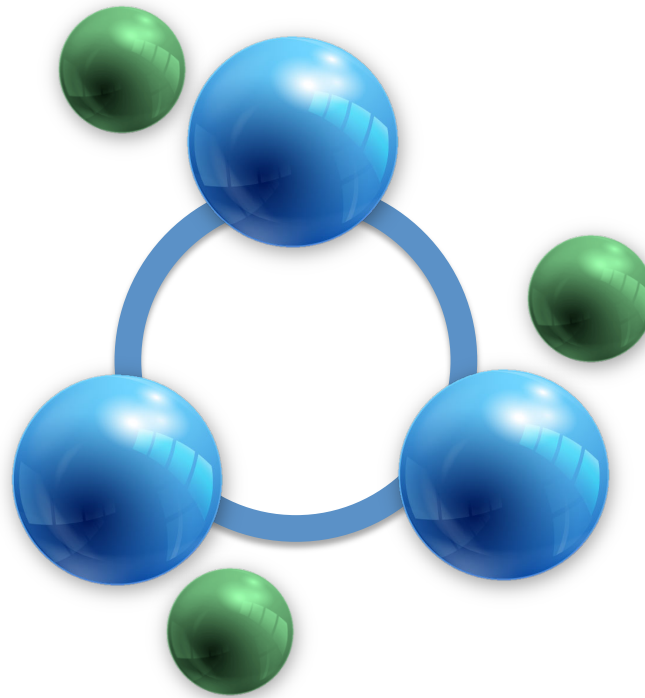
### **City “Hub” Congregations**



“Hubs” are recognized leading ministries within the city. They typically have multiple staff and facilities. Hub congregations serve the City Church by providing resources (soft and hard) to enhance the spiritual vitality and visible unity of the City Church.

## A City Church Model

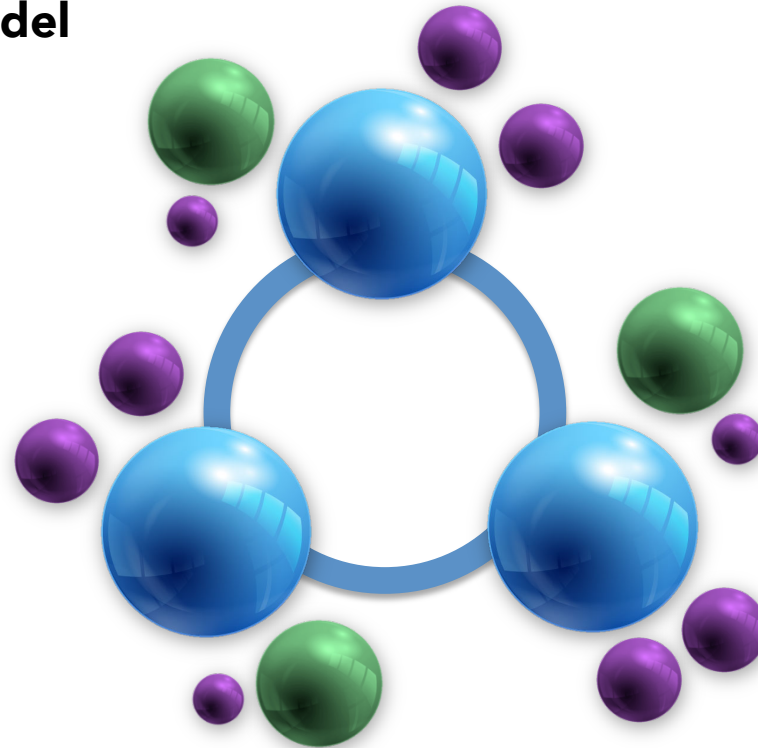
### City Congregations



“Congregations” make up the majority of local churches across America. They typically have 150 or less in attendance, a pastor and perhaps facilities. As an expression of unity, congregations align themselves with a Hub Congregation to maximize resources and impact.

## **A City Church Model**

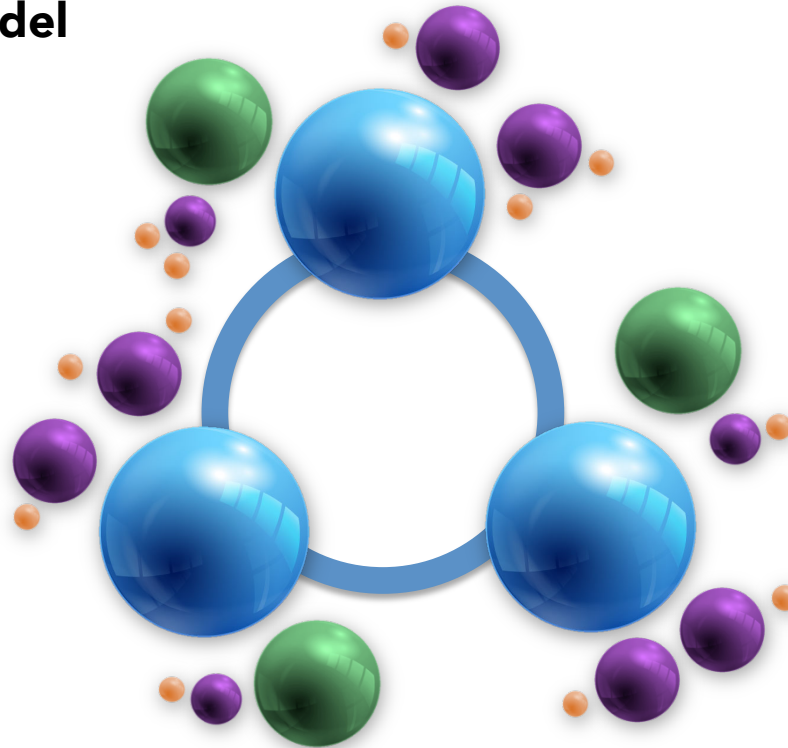
### **Cell Churches**



The future expansion and sustainability of the Church demands a return to an organic model of ecclesiology that empowers the sheep and elevates the role of spiritual gifts. “Hubs” and “congregations” embrace the strategy of Kingdom expansion through Cell Church multiplication.

## **A City Church Model**

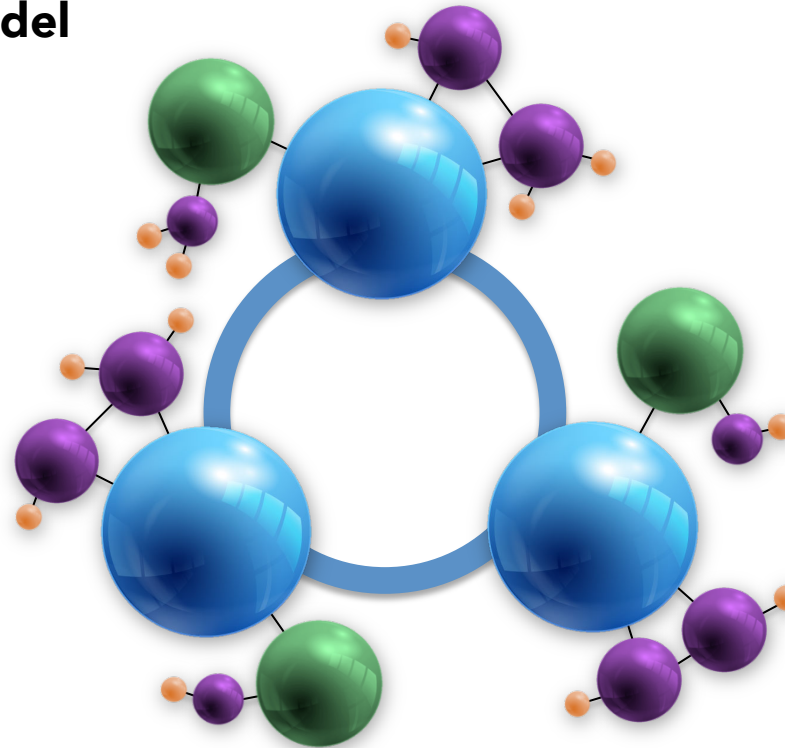
### **Cell Churches<sup>2</sup>**



Living organisms reproduce. The health of Cell Church multiplication will be seen as 2<sup>nd</sup> and 3<sup>rd</sup> generation Cell Churches become common. Like a spiritual virus, they rapidly reproduce.

## A City Church Model

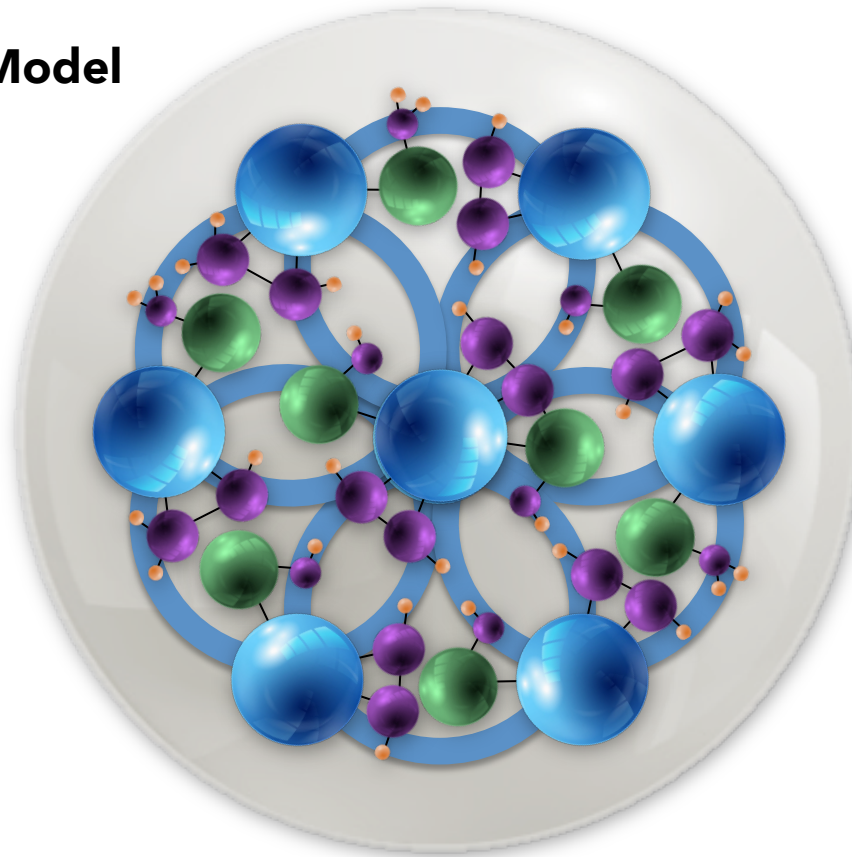
### Cell Churches<sup>2</sup>



The key to City Church vitality is the biblically informed relationships of trust, honor, and devoted love that connect and bind the many expressions of the Body of Christ together.

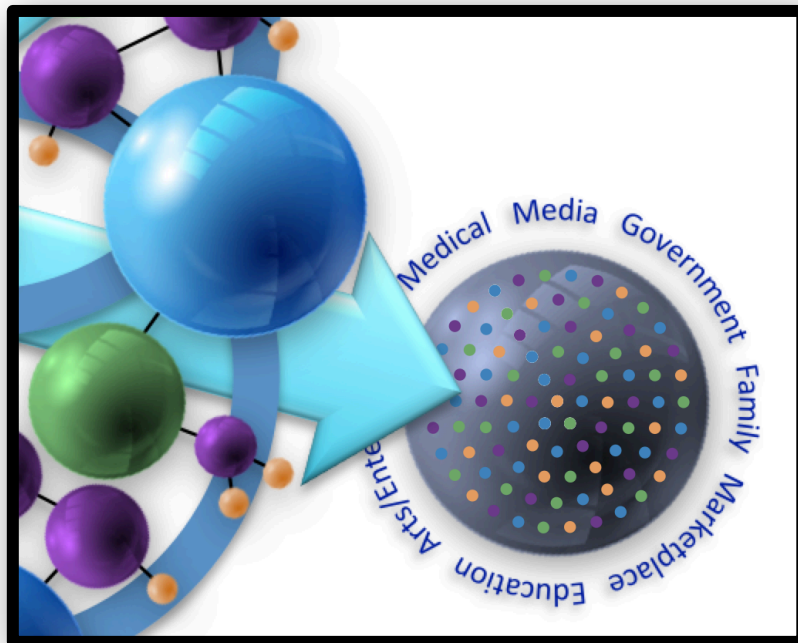
*They are the manifest expression of the unified reality that God tells us is true about His Church.*

## A City Church Model



A vibrant  
“City Church”  
exists when each  
Hub, Congregation,  
and Cell Church are  
*“working properly,  
making the body  
grow so that it  
builds itself up in  
love”* (Eph. 4:16).

# The City Church Is Strategically Positioned To Influence Every Domain Of The City



The Domains of the city include Government, Family, Media, Marketplace, Education, Arts & Entertainment, and Medical.

God has sovereignly placed members of the collective Body of Christ throughout every domain of the city. In so doing, he has positioned the City Church to have a remarkable impact in every realm of the city.

The City Church is not simply one among many of the key domains. By way of its members, the City Church permeates every domain and is, therefore, poised to have an extraordinary influence for Christ in every level of city life.

Imagine the synergistic influence a *unified* City Church could have in every domain of your city.



[www.CityChurchUnite.com](http://www.CityChurchUnite.com)



## A City Church Model

### ***Thinking About Apostolic Leaders and Apostolic Structures***

Apostolic people:

1. Are often the catalysts and prime movers at the beginning of movements.
2. Are found at critical hinge-points upon which the ongoing momentum of a movement depends.
3. Facilitate the multiplication of movements.
4. Are usually foundational to being and/or developing movement leadership.



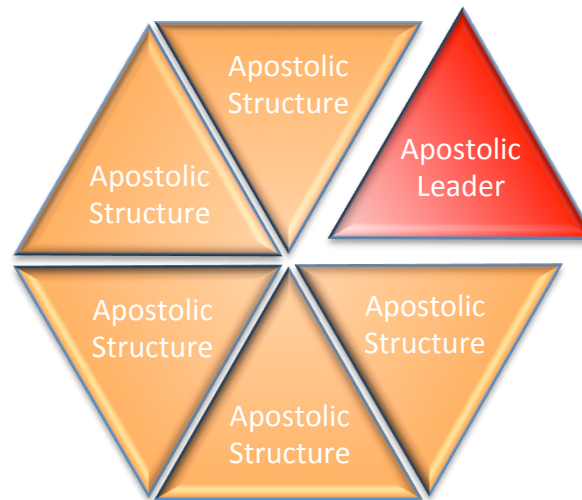
Dr. Sam Metcalf (Novo), among many others, have observed that for the Church to thrive, those with apostolic leadership giftings need apostolic structures in order for them to carry out their calling.

*"As in every age of the Christian movement, apostolic people need apostolic structures if their contribution to God's kingdom purposes are to be fulfilled."*

- Dr. Sam Metcalf

## A City Church Model

### ***Thinking About Apostolic Leaders and Apostolic Structures***



Structure matters. Passion is never enough. Whenever we find movements resulting from people sold out to the mission of God and experiencing his sovereign, powerful presence, structure is always in the equation.

Dr. Sam Metcalf, among many others, have observed that for the Church to thrive, those with apostolic leadership giftings need apostolic structures in order for them to carry out their calling.

*“As in every age of the Christian movement, apostolic people need apostolic structures if their contribution to God’s kingdom purposes are to be fulfilled.”*

## A City Church Model

### *Thinking About Apostolic Leaders and Apostolic Structures*



“Until we understand, legitimize, and embrace the essentiality of such apostolic gifting and structures, and free them from the limitations sometimes imposed by well-meaning local churches, local church leaders, and denominational authorities, we will never be able to overcome the perceptions of irrelevance and marginalization that confront the good news of Jesus in the Western world.”

- Dr. Sam Metcalf

*Beyond the Local Church: How  
Apostolic Movements Can Change  
the World, InterVarsity Press.*

## **A City Church Model**

### ***Thinking About Apostolic Leaders and Apostolic Structures***

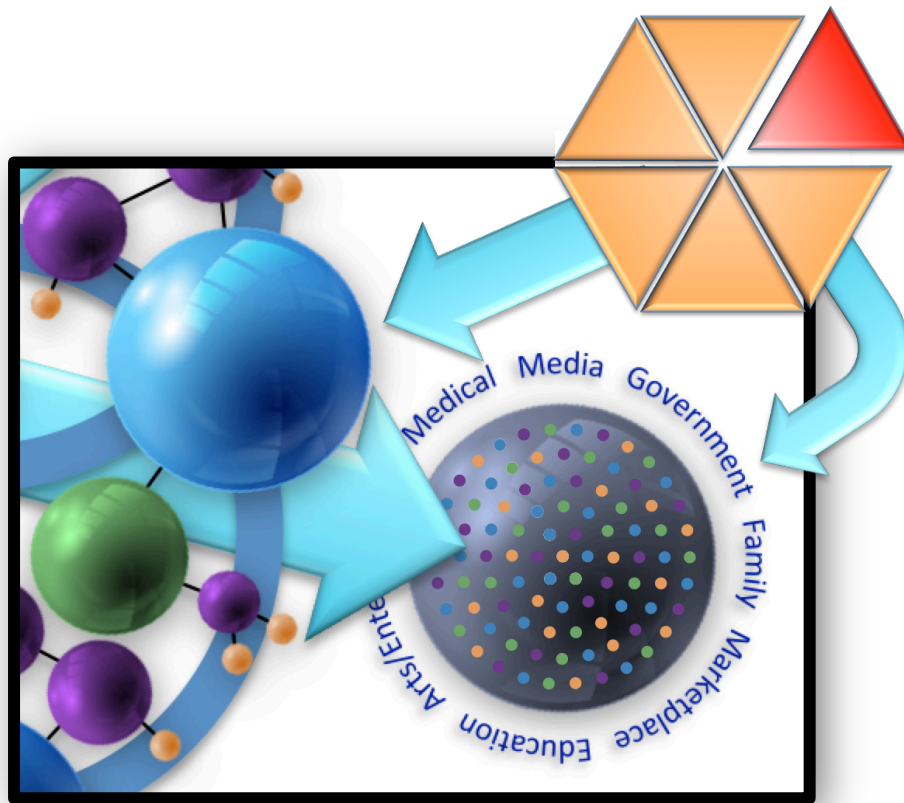


#### **Apostolic structures include**

- Missions organizations
- Pregnancy Centers
- Homeless Shelters
- Childrens Ministries
- Sex Trafficking Initiatives
- Evangelistic Organizations

Passionate leaders, with apostolic giftings, fulfilling their calling through apostolic structures.

## A City Church Model

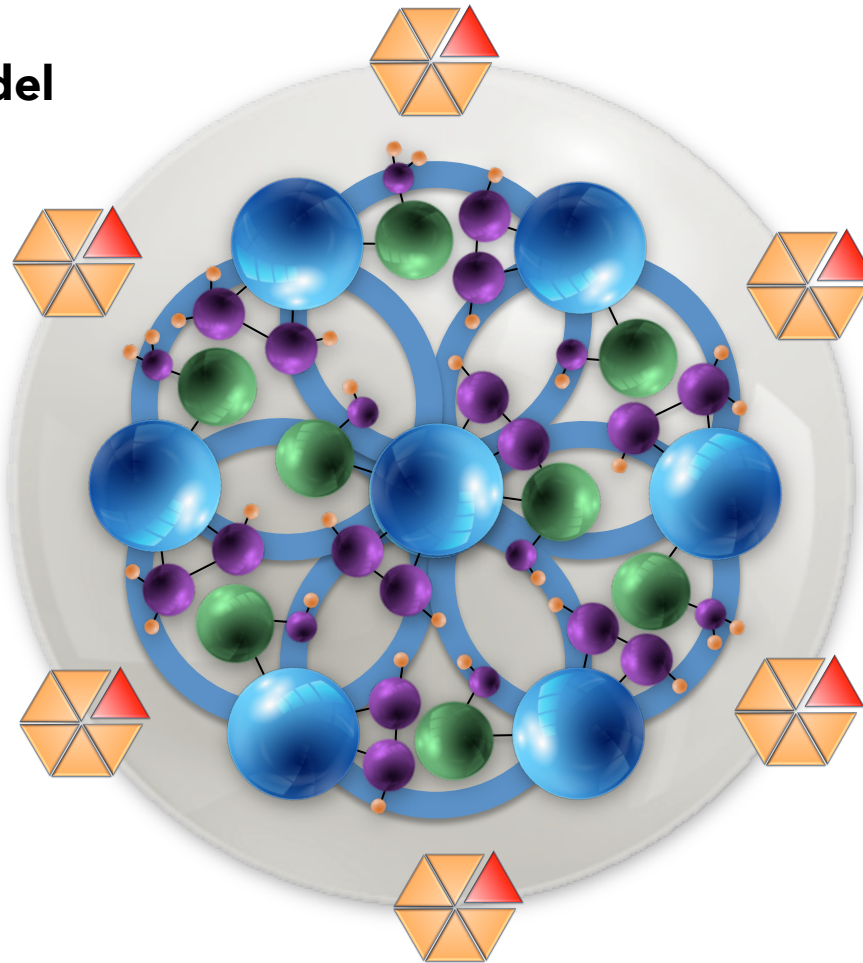


### **Apostolic Leaders and Structures ...**

Aid Kingdom initiatives in two strategic ways. They provide the community with focused ministries and services that local congregations are not designed to undertake.

They also provide the City Church with skilled expertise, training, and strategies in order to enhance the equipping of the saints for their task of saturation, influence, and ministry.

## A City Church Model



Imagine the transformational influence that a vibrant and unified City Church could have on a city –

Congregations, equipped and mobilized believers, recognized apostolic leaders and structures, all collaborating in a movement of gospel saturation.